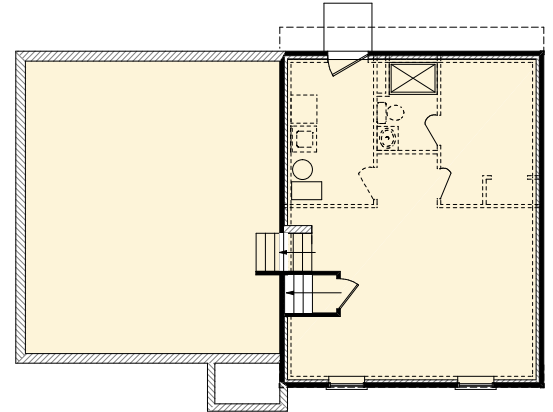


The Briarwood



Elevation B
(Shown with Options)

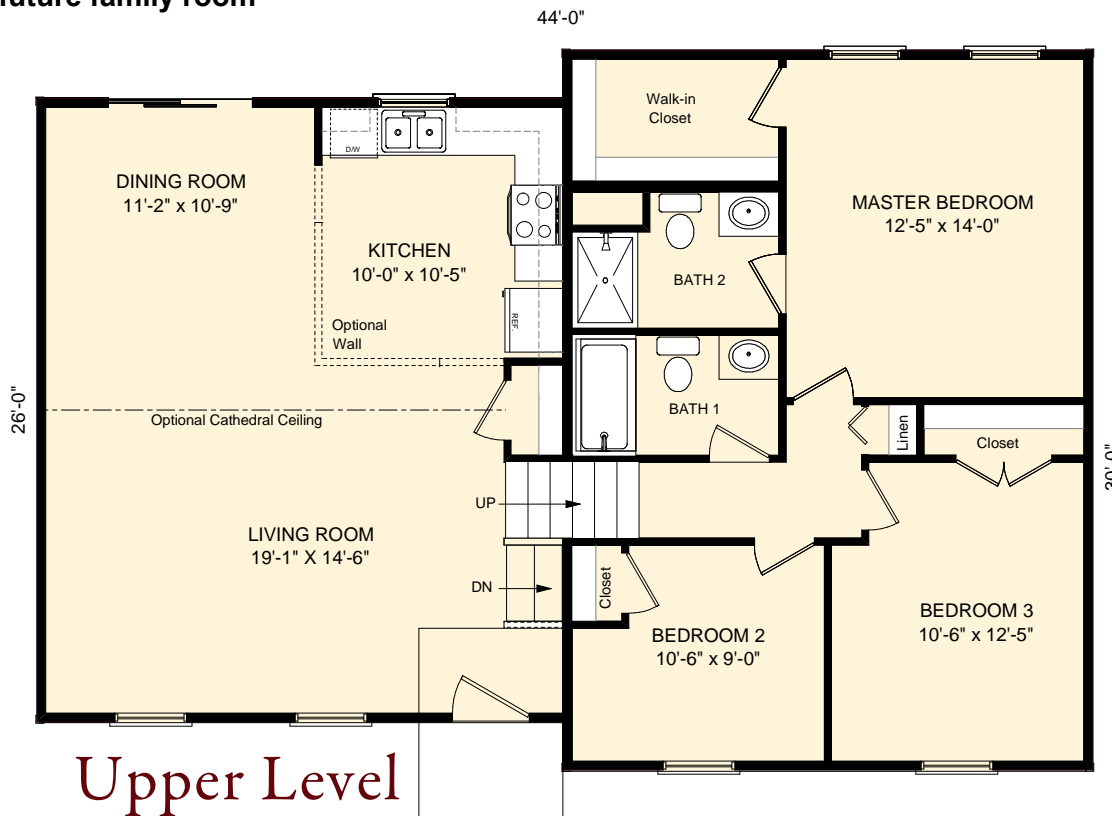
Finished Living Area: 1,232 sf
Unfinished Lower Levels: 1,144 sf



Lower Level Plan

The Briarwood special features:

- ◆ 3 bedroom plan with 2 baths
- ◆ Area for future family room



Upper Level Plan



EQUAL HOUSING OPPORTUNITY
© FOXCRAFT HOME BUILDERS

This brochure is for illustrative purposes only and not part of a legal contract. Some items may be available at additional cost. Room dimensions are approximate and actual plans may vary due to changes in design or building materials. Design and specifications are subject to change without notice or obligation.



Building Your Home Together