

# The Waterford

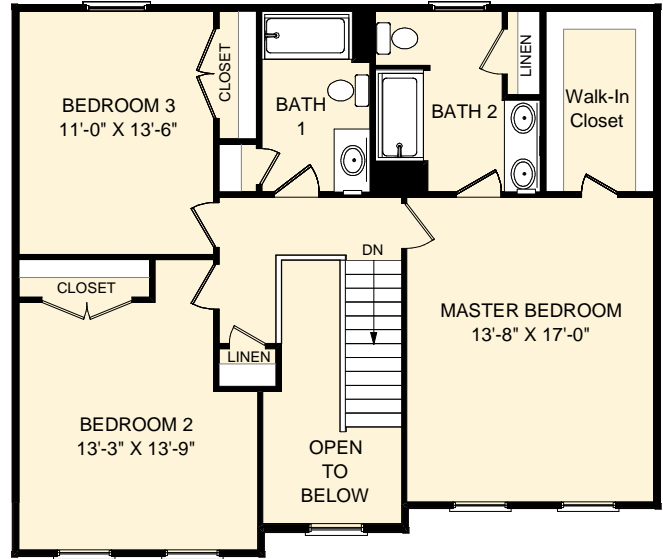


## Elevation B (Shown with Options)

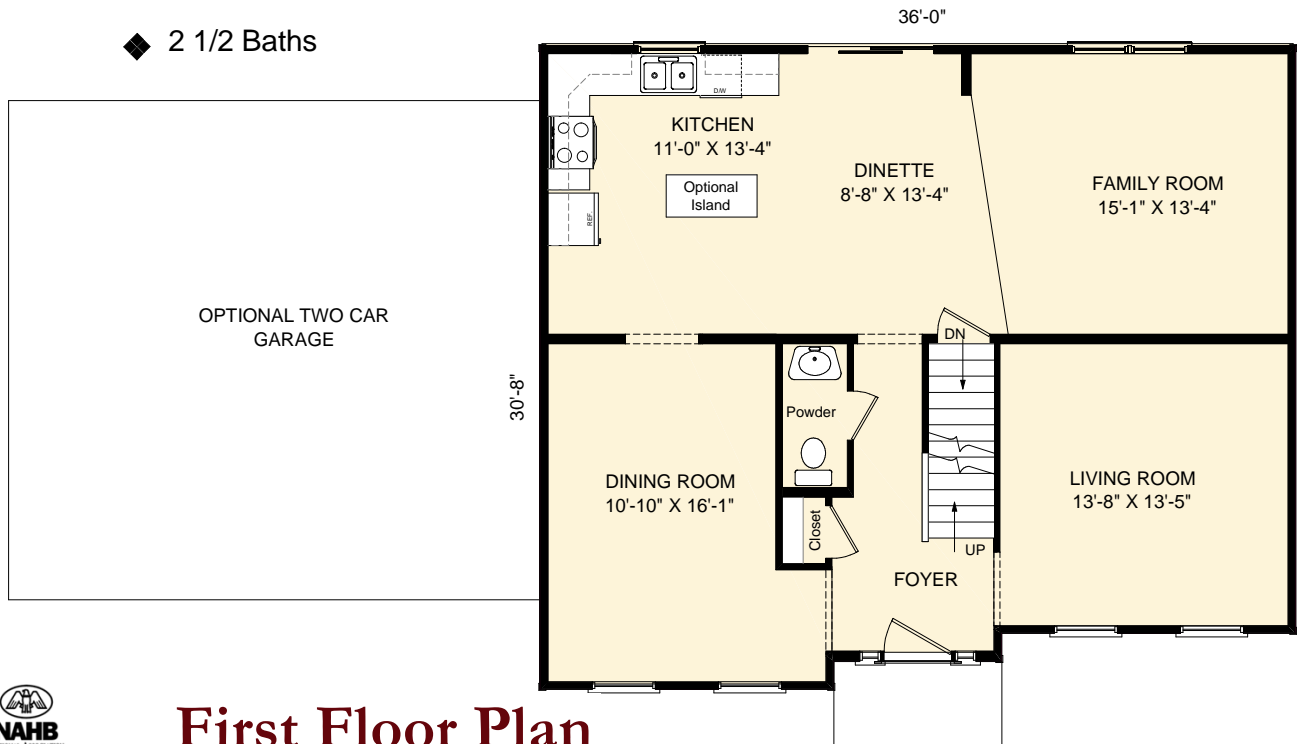
The Waterford special features:

- ◆ Formal Dining & Living Rooms
- ◆ 3 Bedroom plan
- ◆ 2 1/2 Baths

First floor SF: 1,056 sf  
 Second floor SF: 953 sf  
 Total Finished SF: 2,009 sf



## Second Floor Plan



## First Floor Plan



EQUAL HOUSING OPPORTUNITY  
 © FOXCRAFT HOME BUILDERS

This brochure is for illustrative purposes only and not part of a legal contract. Some items may be available at additional cost. Room dimensions are approximate and actual plans may vary due to changes in design or building materials. Design and specifications are subject to change without notice or obligation.



Building Your Home Together