

# The Jacksonville



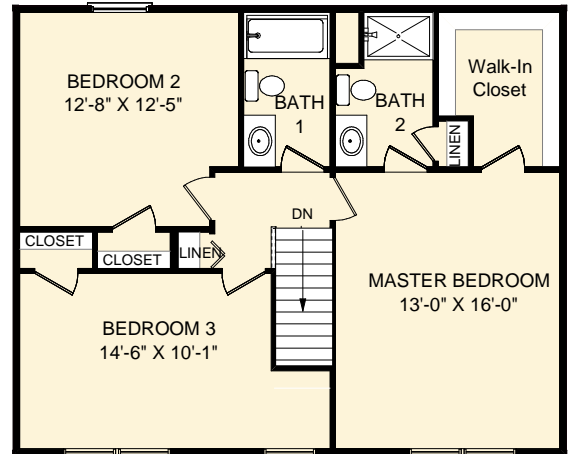
## Elevation B (Shown with Options)

**First floor SF:** 832 sf  
**Second floor SF:** 832 sf

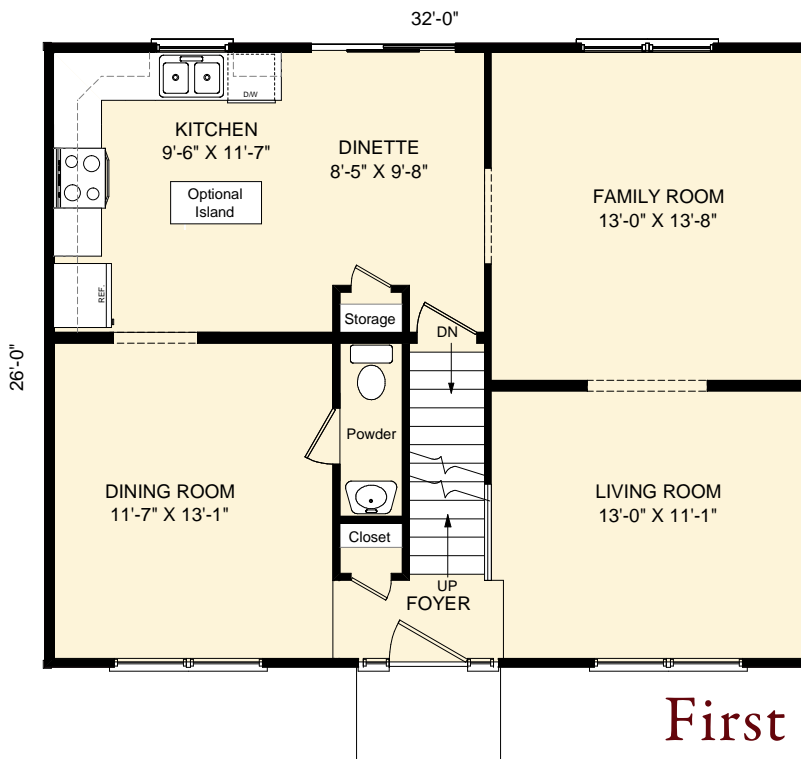
**Total Finished SF:** 1,664 sf

The Jacksonville special features:

- ◆ Formal Dining & Living Room
- ◆ 3 bedroom plan
- ◆ 2 1/2 baths



## Second Floor Plan



## First Floor Plan



EQUAL HOUSING  
OPPORTUNITY  
© FOXCRAFT HOME BUILDERS

This brochure is for illustrative purposes only and not part of a legal contract. Some items may be available at additional cost. Room dimensions are approximate and actual plans may vary due to changes in design or building materials. Design and specifications are subject to change without notice or obligation

**Foxcraft**  
HOME BUILDERS

*Building Your Home Together*